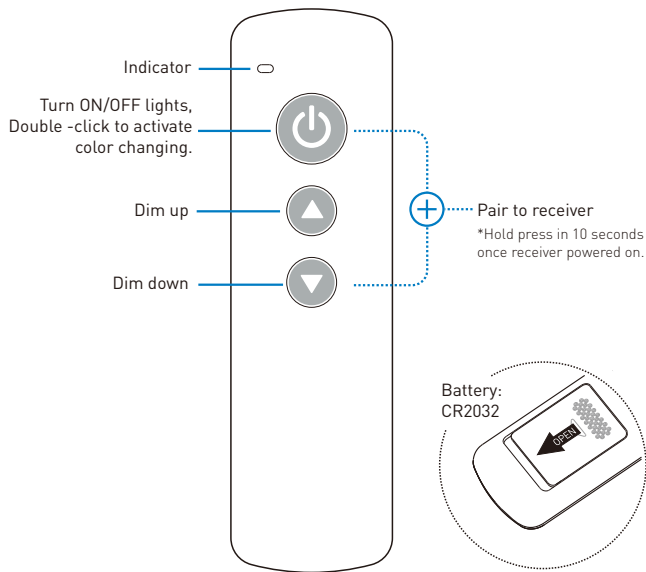


# Radio Frequency Wireless LED Remote Controller

Model: RM05

## Function



## General Purpose Dimming & Color Control

## Operation

### 1. Pair the remote to receiver

The remote controller needs to be paired to receiver to work. User can pair up to 5 remote controllers to one receiver and each single remote controller can be paired to any receiver.

To pair a new remote to the receiver, please operate with following two steps:

- 1). Cut off the power of receiver and power on again after more than 5 seconds.
- 2). Hold press remote (⏻) and (⏮) key simultaneously and briefly within 10 seconds after receiver powered on.

After this operation, the remote is paired to the receiver and ready to work.

### 2. Adjust color

For working with multi-color receivers, user can double click the (⏻) key to adjust the color.

## Specification

Working voltage	DC 3V, CR2032 battery
Wireless protocol	RF433MHz
Frequency band	RF433MHz
Wireless power	< 7dBm
Working temperature	-20-55°C(-4-131°F)