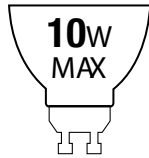


# integral LED



LED Only



## INSTALLATION INSTRUCTION

### Evofire Fire Rated Downlight

- UK design and engineered for LED lamps only.
- Completely open construction to allow for good air circulation for improved lifetime and the highest output possible for LED lamps.
- Fire rated for 30 minutes, 60 minutes and 90 minutes ceilings to BS 476: Part 21:1987 by UKAS approved Exova Warringtonfire when installed in ceilings of approved construction.
- Patent pending construction.
- IP65 dust and moisture sealed from the front when installed correctly.
- Models supplied with 'Insulation Guard' are suitable for coverage by thermal and acoustic insulation e.g. loft insulation. Not suitable for blown insulation.
- Compliant with Part B (Fire), Part C (Condensation), Part E (Acoustic), Part L (Conservation and Fuel and Power, when used with high quality LED lamps such as Integral).
- Compliant with BS EN ISO 140-3:1995, BS EN ISO 140-6:1998, BS EN ISO 717-1:1997, BS EN ISO 717-2:1997.

#### Important Details – Please read prior to installation

1. Ensure the AC/Mains power is NOT connected and cannot be unexpectedly reconnected during installation.
2. This product must be installed by a qualified electrician in accordance with instructions provided and in compliance with recognised electrical and safety regulations relevant to the country it is being installed.
3. This product must not be used with non-LED lamps.
4. This downlight range is designed to be installed in a ceiling tile / plasterboard / solid material, with a thickness of 3mm (minimum) to 30mm (maximum).
5. This product is for indoor use only.
6. The product should NOT be covered with insulation material at any time. Unless using a model with an insulation guard.
7. Minimum clearance is 50mm above the installed fitting and should NOT be installed within 50mm of any joist.
8. Earth wire is provided if required.
9. These instructions refer to an LED lamp with a GU10 lamp base. For instructions on how to install an LED lamp with a MR16 base please visit our website at [www.integral-led.com/evofire-mr16](http://www.integral-led.com/evofire-mr16)

#### Generic Installation Details

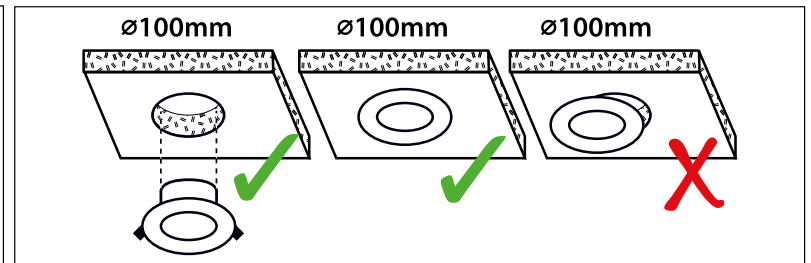
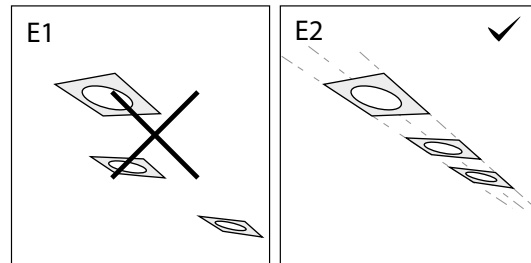
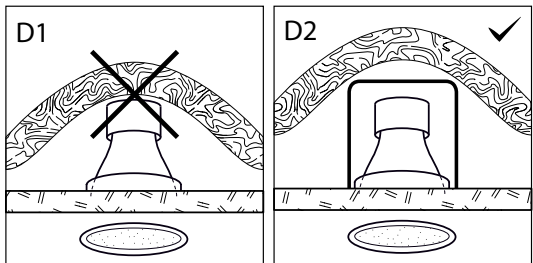
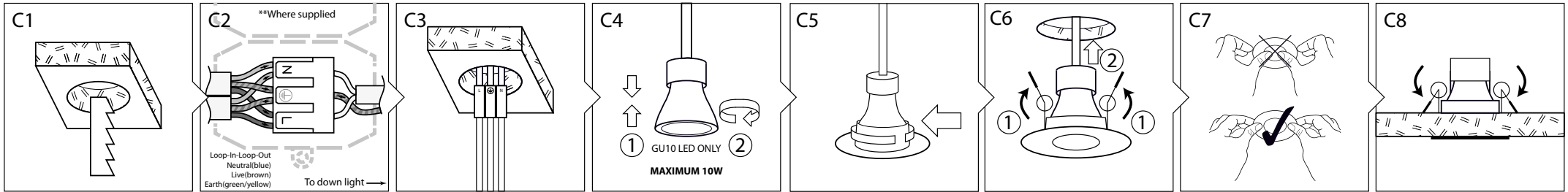
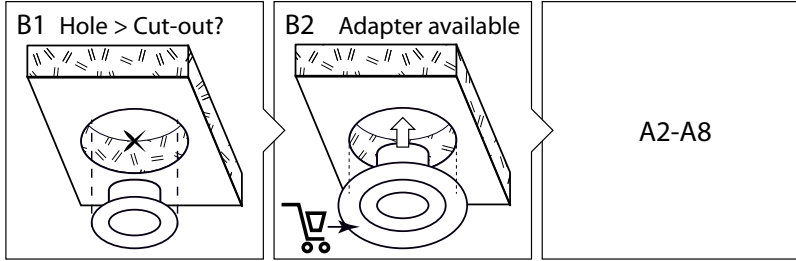
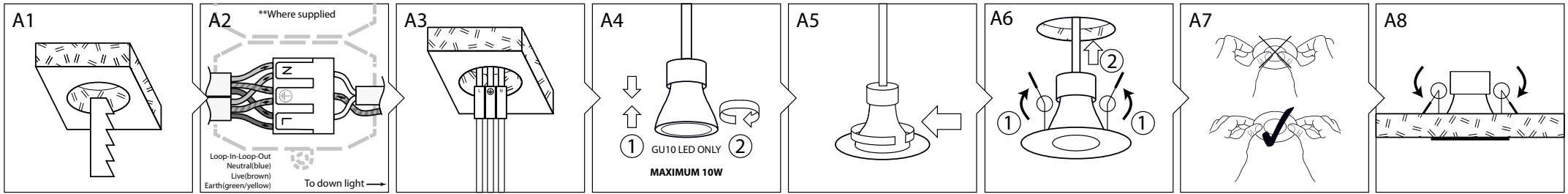
1. Ensure the mains power is turned OFF and cannot be unexpectedly reconnected.
2. For new installations use cutting tools suitable for the material and carefully cut the required hole. Refer to box packaging for cut-out dimension.
3. For refurbishment / retrofit installations, ensure that existing hole is suitable and strong enough to hold the new downlight. Support the surrounding area if required. If the existing hole is larger than the prescribed cut-out, an additional adapter is available.
4. Connect the AC/mains cable. Where a terminal block is provided, incoming cable connections are; L = Live power conductor (brown wire), N = Neutral power conductor (blue wire), ⊕ Earth green/yellow wire).

#### Generic Installation Details

Refer to the correct instruction pages for your product.

Integral Code	EAN Barcode	Go to figures
<b>Round</b>		
ILD LFR70D001	5055788228325	A1 to A8, D1
ILD LFR70D001-4	5055788228356	A1 to A8, D1
ILD LFR70D002	5055788228387	A1 to A8, D1
ILD LFR70D002-4	5055788228417	A1 to A8, D1
ILD LFR70D015	5055788236481	A1 to A8, D1
ILD LFR70D016	5055788236511	A1 to A8, D1
ILD LFR70D017	5055788238317	A1 to A8, D1
ILD LFR70D021	5055788238447	A1 to A8, D1
ILD LFR70D011	5055788228905	A1 to A8, D1
ILD LFR70D012	5055788228943	A1 to A8, D1
ILD LFR70D028	5055788253792	A1 to A8, D1
ILD LFR70D029	5055788253815	A1 to A8, D1
ILD LFR70D045	5055788268123	A1 to A8, D2
ILD LFR70D046	5055788268130	A1 to A8, D3
ILD LFR70D047	5055788268147	A1 to A8, D4
ILD LFR70D048	5055788268154	A1 to A8, D5
<b>Round w/Insulation Guard</b>		
ILD LFR70D003	5055788228448	A1 to A8, D2
ILD LFR70D003-3	5055788228479	A1 to A8, D2
ILD LFR70D004	5055788228509	A1 to A8, D2
ILD LFR70D004-3	5055788228530	A1 to A8, D2
ILD LFR70D013	5055788236429	A1 to A8, D2
ILD LFR70D014	5055788236450	A1 to A8, D2
ILD LFR70D018	5055788238348	A1 to A8, D2
ILD LFR70D020	5055788238416	A1 to A8, D2

Integral Code	EAN Barcode	Go to figures
<b>Round Adapter</b>		
ILD LFR70D005	5055788228561	B1, B2, A1 to A8
ILD LFR70D006	5055788228592	B1, B2, A1 to A8
ILD LFR70D019	5055788238386	B1, B2, A1 to A8
ILD LFR70D030	5055788253921	B1, B2, A1 to A8
ILD LFR70D049	5055788270812	B1, B2, A1 to A8
ILD LFR70D050	5055788270829	B1, B2, A1 to A8
<b>Square</b>		
ILD LFR70D007	5055788228622	A1 to A8, D1, E1, E2
ILD LFR70D008	5055788228653	A1 to A8, D1, E1, E2
<b>Square w/Insulation Guard</b>		
ILD LFR70D009	5055788228684	A1 to A8, D2, E1, E2
ILD LFR70D010	5055788228714	A1 to A8, D2, E1, E2
<b>Recessed</b>		
ILD LFR70E001	5055788228745	C1 to C8, D1
ILD LFR70E002	5055788228776	C1 to C8, D1
ILD LFR70E003	5055788236542	C1 to C8, D2
ILD LFR70E004	5055788236573	C1 to C8, D2



RoHS  
IP65

Warranty/Technical and contact information are all available at [www.integral-led.com](http://www.integral-led.com)

EVOFRDLINSTR04 GRP1

Integral LED is a division of Integral Memory plc:  
Unit 6, Iron Bridge Close, Iron Bridge Business Park, London, NW10 0UF, UK  
EC/REP: Integral Europe BV 2801 DG, NL