

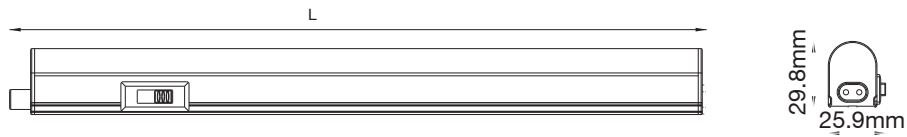
# integral™ LED

INSTALLATION INSTRUCTIONS  
INSTRUCTIONS D'INSTALLATION  
INSTALLATIE INSTRUCTIES  
INSTRUCCIONES DE INSTALACIÓN  
INSTALLATIONSANLEITUNG  
INSTRUKCJE INSTALACJI  
INSTRUÇÕES DE INSTALAÇÃO

UNDER CABINET BATTEN 3 CCT

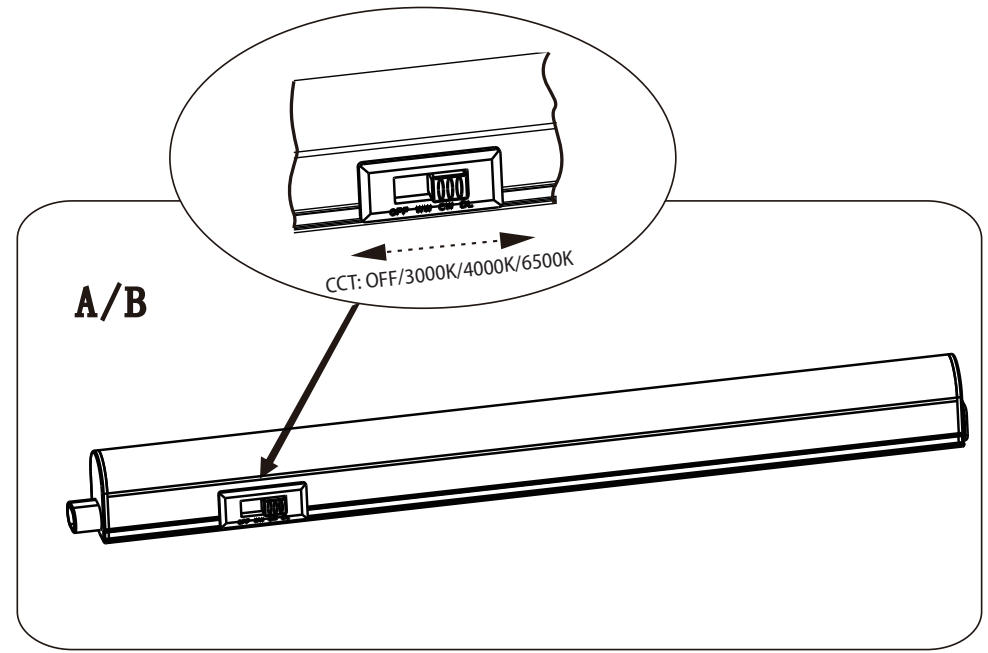


This product contains a light source of energy efficiency class <E>

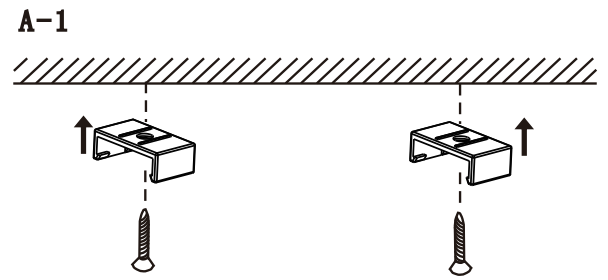


Watt	4W	7W	9W	13W	18W	22W
L	289	517	555	850	1150	1450

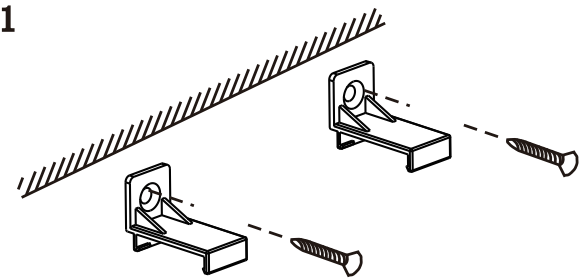
1



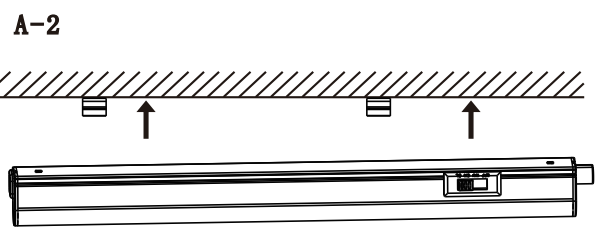
2



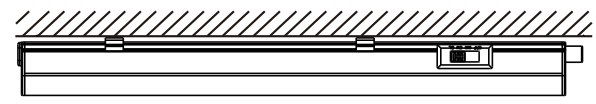
B-1



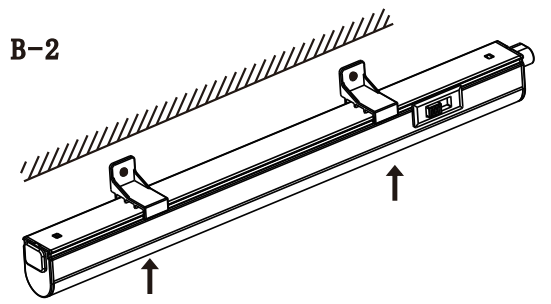
3



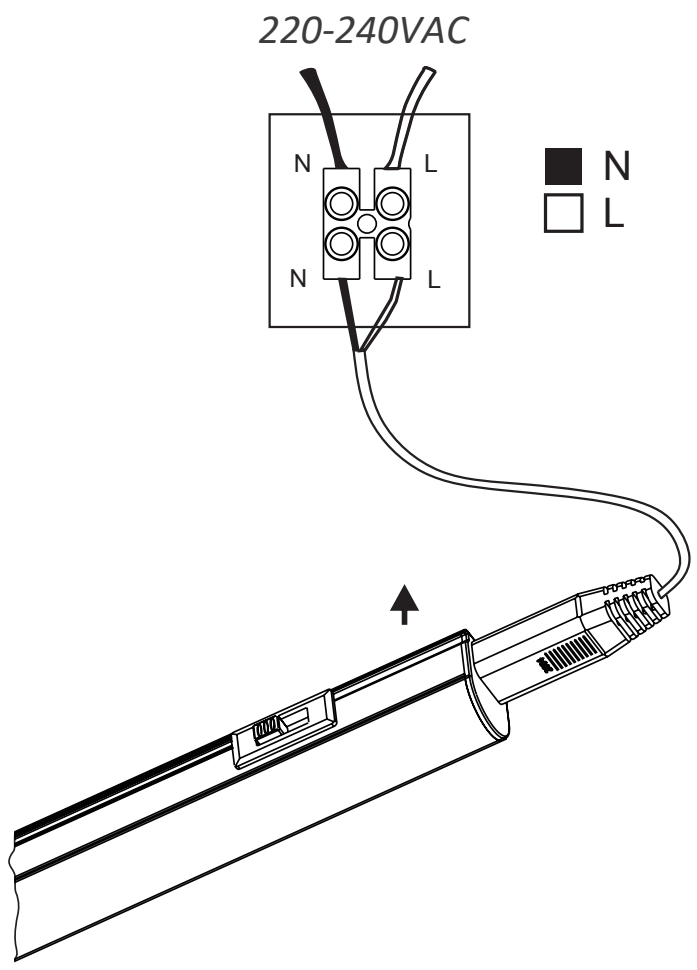
A-3



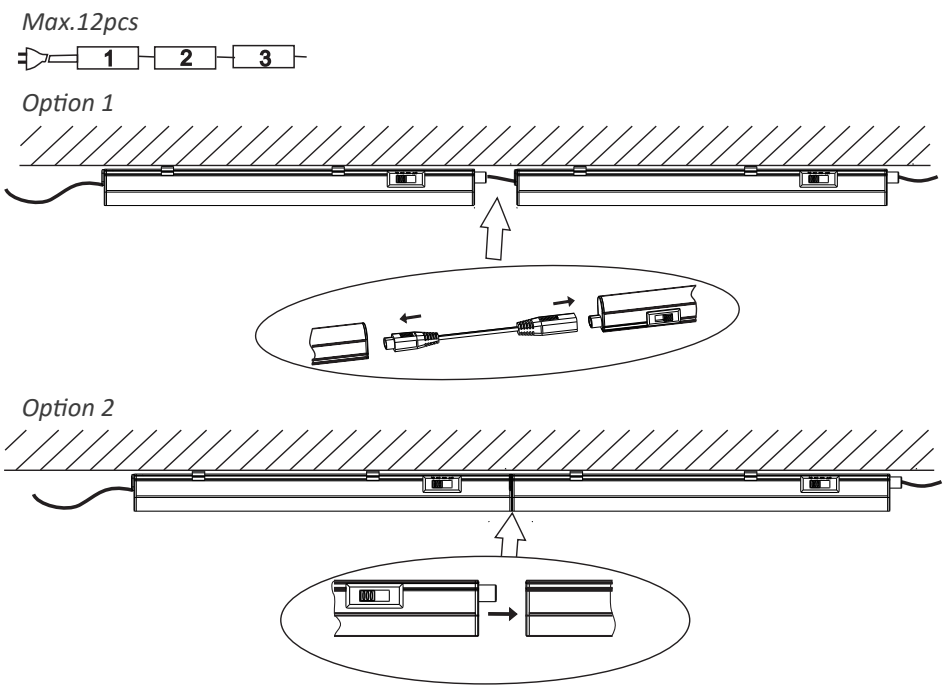
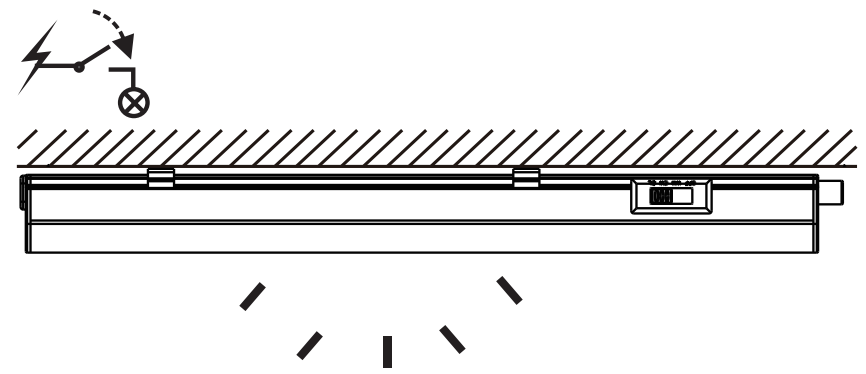
B-2



4



5



Warranty/ Technical  
& contact information  
are all available at  
[www.integral-led.com](http://www.integral-led.com)

IS1051 A



Integral LED is a division of Integral Memory plc:  
Unit 6, Iron Bridge Close, Iron Bridge Business Park,  
London, NW10 0UF, UK  
Integral Europe BV, 2801 DG, NL