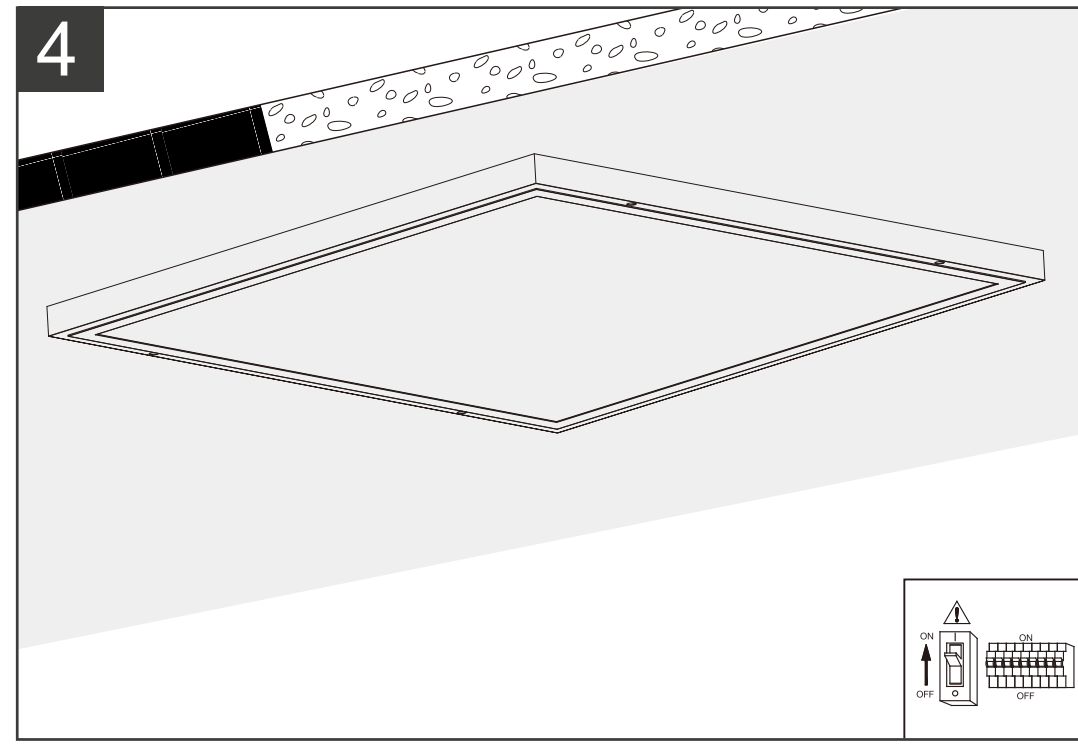
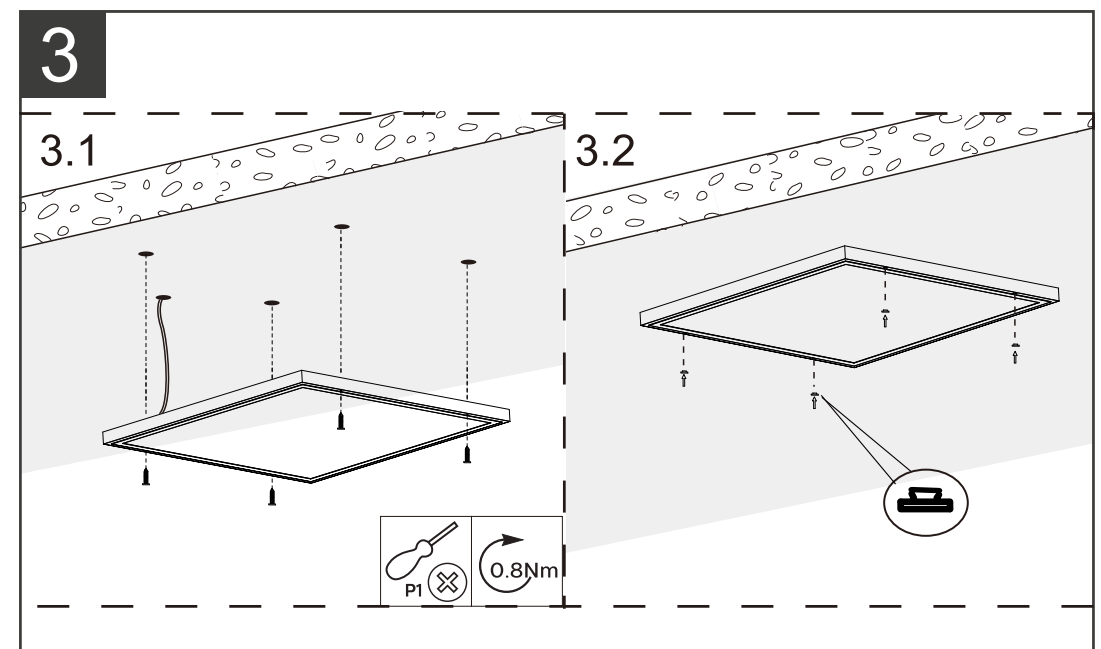
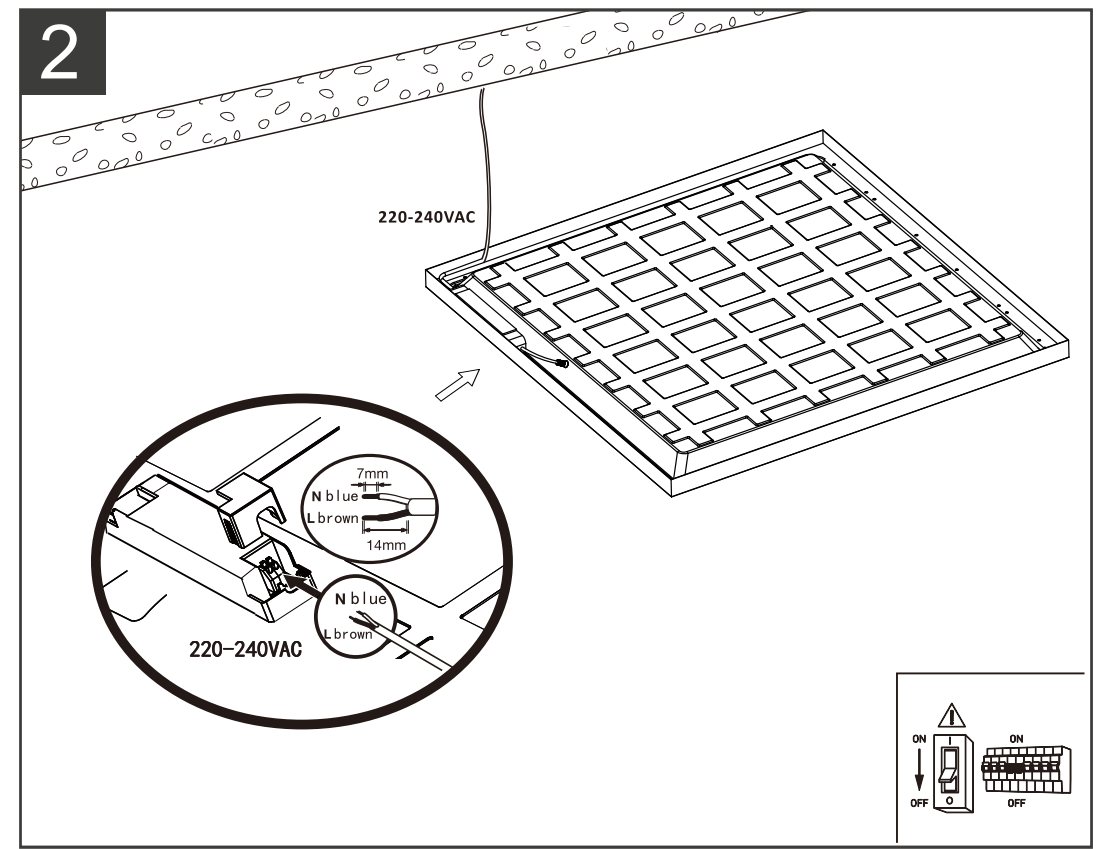
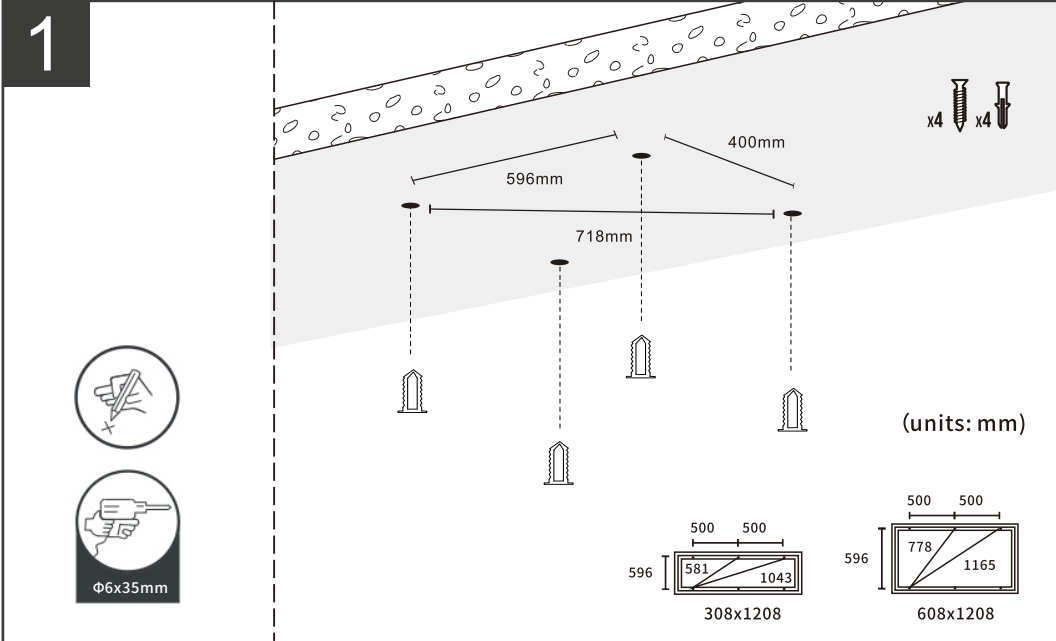
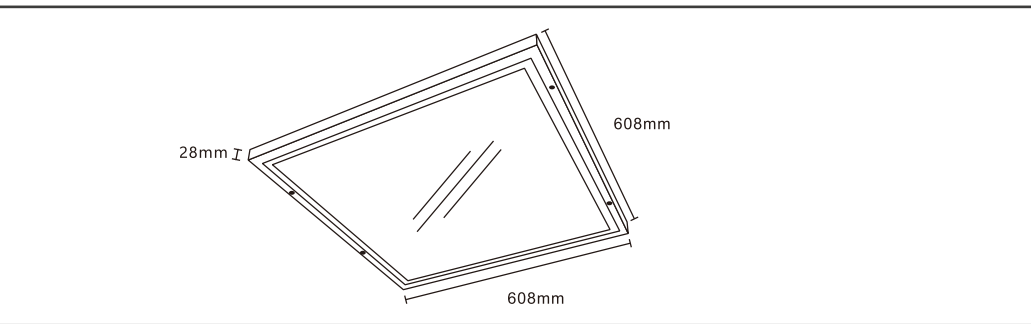


**integral™**  
**LED**

INSTALLATION INSTRUCTIONS  
INSTRUCTIONS D'INSTALLATION  
INSTALLATIE INSTRUCTIES  
INSTRUCCIONES DE INSTALACIÓN  
INSTALLATIONSANLEITUNG  
INSTRUKCJE INSTALACJI  
INSTRUÇÕES DE INSTALAÇÃO

Evo Surface Panel



Type	Wattage	CCT	IP	Operating Temperat	VAC	Hz	power Factor
91-06-02	33W	4000K	20	-20 to +45°C	220-240V	50/60	0.9
50-54-70	36W	4000K					
38-94-74	36W	4000K					
16-25-57	50W	4000K					

Warranty/ Technical & contact information are all available at [www.integral-led.com](http://www.integral-led.com)



Integral LED is a division of Integral Memory plc:  
Unit 6, Iron Bridge Close, Iron Bridge Business Park,  
London, NW10 0UF, UK  
Integral Europe BV, 2801 DG, NL

IS1055 C